



## Low-Level Order Picker Capacity 2000 – 2400 kg N 20 / N 20 / 24 HP SERIES 132

### Safety

Compact design of the Linde control handlebars ensures that the operator remains well within the truck contours while driving. Ergonomic design of the twin grips enclosed by a hand guard and a 4 mm thick steel front shield assure excellent safety for the operator.

### Performance

Powered by an AC motor of 3 kW output, the N20 remains steady, accelerates rapidly and safely to top speed of 10 km/h loaded and 12 km/h unloaded. A speed of 12 km/h with or without load is attainable with the HP configuration, equipped with active castor wheels to enhance productivity in intensive (long transfers) applications.

### Comfort

Precision working at the highest level of performance calls for a high level of operator comfort. The adjustable backrest and handlebar (optional), added to the full-suspension

Linde Material Handling

*Linde*

platform surfaced with a cushioning non-skid mat provide superior comfort. Well equipped & designed, the unique truck architecture leads to an efficient picking.

### Reliability

The robust chassis of high-grade steel construction contributes to increase the life time of the truck as well as improved performance on the job. Sturdy forks; up to 2900 mm long, are capable of carrying four roll cages at a time as the task demands.

### Service

Efficiency at work, efficiency at the cost level. CAN bus connection enables all truck data to be read out for inspection when servicing becomes due at intervals of 1,000 operating hours. Easy accessibility of all components and the maintenance free AC technology employed play an additional part in keeping truck uptime up.

# Technical data (According to VDI 2198)

Characteristics	1.1	Manufacturer		LINDE
	1.2	Model designation		<b>N20</b> (2350 long forks)
	1.3	Power unit		Battery
	1.4	Operation		Order picker
	1.5	Load capacity	Q (kg)	2000
	1.6	Load centre	c (mm)	1200
	1.8	Axle centre to fork face (fork raised/lowered)	(± 5 mm) x (mm)	1702/1763
	1.9	Wheelbase (fork raised/lowered)	(± 5 mm) y (mm)	2264/2325 <sup>1)</sup>
	Weights	2.1	Service weight (with battery item 6,5)	(± 10 %) kg
2.2		Axle load with load, drive side/load side	(± 10 %) kg	-
2.3		Axle load without load, drive side/load side	(± 10 %) kg	-
Wheels	3.1	Tyre treads: Polyurethane, Rubber		R + P/P; P + P/P
	3.2	Tyre size, drive side	mm	Ø 254 x 102
	3.3	Tyre size, load side	mm	2 x Ø 85 x 105
	3.4	Auxiliary wheels (dimensions)	mm	Stab. Ø 125 x 60
	3.5	Wheels number, drive side/load side (x = driven)		1x + 1/2 (1/4); 1x + 2/2 (2/4) <sup>2)</sup>
	3.6	Track width, drive side	(± 5 mm) mm	544
	3.7	Track width, load side	(± 5 mm) mm	-
Dimensions	4.4	Lift	(± 5 mm) h3 (mm)	120
	4.8	Height of the seats	h7 (mm)	900 / 1000
	4.9	Height of the tiller arm in operating position, min/max	h14 (mm)	1140 / 1190
	4.15	Fork height, lowered	h13 (mm)	85
	4.19	Overall length	(± 5 mm) l1 (mm)	3747 <sup>1)</sup>
	4.20	Length to fork face	(± 5 mm) l2 (mm)	1397 <sup>1)</sup>
	4.21	Overall width	(± 5 mm) b1 (mm)	790
	4.22	Fork dimensions	s/e/l (mm)	60 x 166 x 2350
	4.25	Fork spread	(± 5 mm) b5 (mm)	520
	4.32	Ground clearance, centre of wheelbase min/max	m2 (mm)	-
	4.33	Aisle width with pallet 1000 x 1200 across forks	Ast (mm)	-
	4.34	Aisle width with pallet 800 x 1200 along forks	Ast (mm)	3897 <sup>1)</sup>
	4.35	Turning radius (fork raised)	Wa (mm)	3090 / 3158 <sup>1)</sup>
Performances	5.1	Travel speed, with/without load (4 points; 5 points)	(± 5 %) km/h	10 / 12; 12 / 12
	5.2	Lifting speed, with/without load	(± 10 %) m/s	0.031 / 0.039
	5.3	Lowering speed, with/without load	(± 10 %) m/s	0.076 / 0.073
	5.8	Maximum climbing ability, with/without load	%	-
	5.9	Acceleration time, with/without load (forward/backwards)	s	1.44 / 1.04; 1.51 / 1.21
	5.10	Service brake		Electromagnetic
Drive	6.1	Driving motor (60 minutes rating)	kW	3
	6.2	Lift motor rating 15 %	kW	1
	6.3	Battery according to DIN 43531/35/36 A, B, C, no		DIN 43535 B
	6.4	Battery voltage/rated capacity (5h)	V/Ah	24 / 620
	6.5	Battery weight	kg	485
Others	8.1	Type of drive control		LAC-Controller
	8.4	Sound level at operator's ear	dB (A)	-

Standard truck figures varying according to equipments

<sup>1)</sup> 4 PzS LS: 100 mm less for 3 PzS version

<sup>2)</sup> Data for 4 points version single load wheel (tandem); for 5 points version single load wheel (tandem)

<sup>3)</sup> The N24 is only available in a 5 points version

LINDE

**N24** (1150 long forks)

Battery

Order picker

2400

600

902/963

1464/1525<sup>1)</sup>

1115

1314/1801

900/215

R + P/P; P + P/P

Ø 254 x 102

2 x Ø 85 x 105

Stab. Ø 125 x 60

1x + 2/2 (2/4)<sup>3)</sup>

544

-

120

900/1000

1140/1190

85

2547<sup>1)</sup>

1397<sup>1)</sup>

790

60 x 166 x 1150

520

30

2797<sup>1)</sup>

2797<sup>1)</sup>

2290/2358<sup>1)</sup>

12/12<sup>3)</sup>

0.031/0.039

0.076/0.073

-

-

Electromagnetic

3

1.2

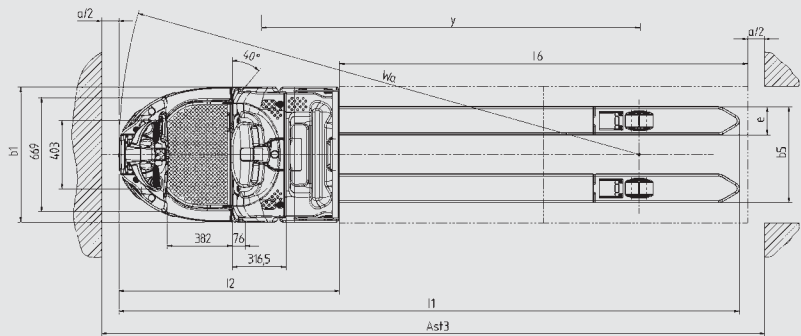
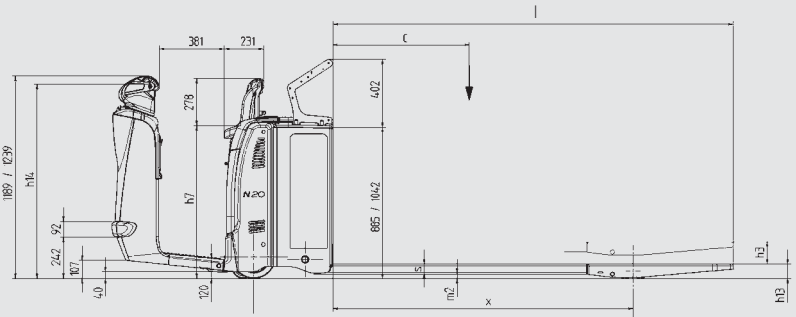
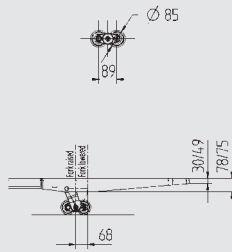
DIN 43535 B

24/620

485

LAC-Controller

-



AST = Wa - x + l6 + a  
 a: security distance = 200 mm

± 5 %	N 20	Forward unloaded	loaded	Backwards unloaded	loaded	N 24	Forward unloaded	loaded	Backwards unloaded	loaded
<b>Version 4 points</b>		12	10	10	10		-	-	-	-
<b>Version 5 points</b>		12	12	10	10		12	12	10	10



# Equipment

## Standard equipment

Backlit multifunction display	AC drive motor
Truck activated by entering unique PIN code or by ignition key	Automatic braking on releasing butterfly switch
Safe operator compartment with cushioned full-suspension platform	Electromagnetic emergency brake acting proportionally to the load weight
Workstation incorporating storage compartments	Active castor wheels (on the five-point contact version)
Clipboard	Cushion drive wheel
Adjustable backrest	Single or tandem polyurethane load wheels
Power-assisted steering, adjustable steering resistance	Electric horn
Self-centering steering	Low temperature protection to -10°C
Automatic speed reduction on turns	

## Options

Other fork dimensions (length to 2900 mm)	Data terminal on the bow (front)
Drive wheel: polyurethane, cushion non-marking or wet grip	Battery on rollers for side change
Single or tandem greasable load wheels	Cold store version to -35°C
Inching buttons on each side buttons each side	
Adjustable Linde control handlebars	
Load backrests	
Equipments on the pole	
Support for data terminal or barcode reader (centre)	Other options available on request.

# Features

## Drive system

- Four-point contact configuration for maximum stability
- Top speed 10 km/h loaded, 12 km/h unloaded
- Automatic braking on releasing the travel switch
- Well controllable regenerative braking on reversing direction of travel
- Electromagnetic braking initiated by the emergency stop button acts on the drive motor, proportional to the load carried



## High-performance option (HP)

- Five-point contact configuration for utmost truck stability
- Electronically controlled hydraulic-suspension active castor wheels for superb stability and traction
- Top speed 12 km/h loaded or unloaded

## Batteries for every need

- Vertical battery change as standard, optional side battery change left or right
- Wide range of batteries (low & high) from 270 Ah (3 PzS) to 620 Ah (4 PzS)
- Battery locking system for side change option secures battery in compartment and ease the battery change

## Linde control handlebars

- Ergonomic design and position
- Optimum protection for both hands
- All main control functions integrated in the one handle for operation by either hand or both
- Handlebar height adjustment (optional)

## CAN bus connectivity

- Electronic management of all components permitting quick and easy diagnosis
- All performance parameters can be configured exactly by the service technician for every individual mission



## Workstation

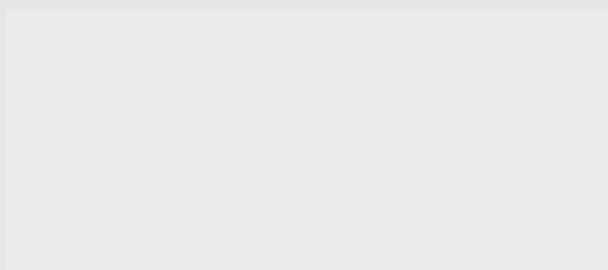
- Digital multifunction display
- Truck activated by PIN code or by ignition key
- Wide and deep storage compartments in front and centre for wrapping paper, work gloves, writing utensils, etc.
- Adjustable scoop seat height to provide comfortable and secure riding position

## AC motor

- Powerful, smooth-running 3 kW (at 100% performance) AC motor
- Moisture- and dust-proof motor, zero maintenance requirement
- Gradeability 13% fully loaded
- No rollback on uphill starting
- Forceful acceleration takes truck to top speed within 5 metres

## Power steering

- Proportional power-assisted steering, self-centering and effortless to operate
- Adjustable steering feedback resulting in outstanding stability
- Automatic speed reduction when cornering
- Manoeuvring effort varies depending on the turning angle



Linde AG

Linde Material Handling Division, Postfach 10 01 36, 63701 Aschaffenburg, Germany  
Phone +49.60 21.99-0, Fax +49.60 21.99-15 70, [www.linde-forklifts.com](http://www.linde-forklifts.com), [info@linde-forklifts.com](mailto:info@linde-forklifts.com)

Linde Material Handling

Subject to change in the interests of progress. Illustrations and technical details non-binding. All dimensions subject to customary tolerance.

Printed in Germany · 056 · e - 6 · 0206 · Ind. B · Co