



## Standard Equipment/Optional Equipment

### Standard Equipment

Hydrostatic power steering  
 Linde twin accelerator pedals for all vehicle movements  
 Central lever (joystick control) integrated into the adjustable armrest  
 2 x 12 kW maintenance free AC drive motors  
 25 kW AC maintenance free lift motor  
 Different ECO modes providing the perfect combination of performance and efficiency  
 Graphic display of battery operating time in minutes  
 Automatic parking brake  
 Linde dual motor drive  
 Proportional reduction of travel speed when cornering (Linde Drive Assistant)  
 Seamless electronic control of all traction and hydraulic movements  
 Standard chassis suitable for working in ISO containers with appropriate mast  
 Hydraulically adjustable full suspension PVC operator's seat with armrest  
 Comprehensive digital instrument display

Generous storage facilities for writing materials and miscellaneous items  
 Superelastic tyres

### Mast

Clearview standard mast 3,100 mm lift  
 Fork carriage width:  
 1,350 mm for all models  
 Fork length 1,000 mm

### Optional Equipment

Single pedal accelerator with forward/reverse selector in the armrest  
 Alternative fork lengths  
 Alternative fork carriage widths  
 Integrated sideshift  
 Integrated fork spreader  
 Tilt cylinder protection  
 Load backrest  
 One, two or three additional hydraulic circuits for attachments  
 Polycarbonate top screen on overhead guard  
 Front and rear screens, wipers and tops screen  
 Full cab with hinged doors  
 Overhead guard sun blinds (front + top)  
 Heating (with pollen protection filter)  
 Radio with CD player  
 Fabric covered comfort seat  
 Super-comfort seat with air suspension, heater and backrest extension  
 Swivelling seat  
 Integrated charger unit, optionally with electrolytic circulation  
 Individual or single hydraulic control joystick  
 Working lamps with LED technology  
 Truck lighting with LED technology (only rear lights)

Full road lighting  
 Flashing beacon/rotating beacon  
 Audible reversing alarm  
 External, internal and panoramic mirror  
 Clipboard with LED illumination  
 Cold store protection  
 Active ventilation for battery charging  
 Alternative custom paintwork  
 Linde Fleet Management (LFM)  
 Alternative tyre types  
 Electrical socket 12 V

Other options available on request



## Electric Counterbalanced Trucks Capacity 3500 - 5000 kg E35, E40, E45, E50

Series 388



### Safety

The protective overhead guard forms a strong and completely enclosed protective zone providing optimum structural integrity, safety and protection for the operator. The top mounted tilt cylinders provide seamless, smooth control of the tilt movements for excellent load stability in all operating conditions. This unique design also enables slimmer mast profiles to be fitted for outstanding visibility.

### Performance

One would expect a high performance truck to have a high performance traction system – and that is exactly what the Linde compact drive axle and lift system delivers. Powerful motors and intelligent electronic control form an impressive power pack to deliver the highest level of productivity.

### Comfort

Consistently high levels of performance and efficiency for extended periods are only possible if the operator feels comfortable. The ergonomic layout of all the controls, the adjustability of the armrest and seat, Linde Load Control, and twin accelerator pedals provide the best possible intuitive interface between the truck and the operator.

### Reliability

An electric forklift truck depends on reliable electronic systems. The Linde electronic control system provides a high level of reliability because of its dual circuit monitoring system and the sealed aluminium housing which provides total protection for the electronics from the ingress of dust and moisture.

### Productivity

Effective in operation, efficient in reducing costs: The unique Linde energy management system ensures intelligent and economical consumption of energy. Energy can also be obtained quickly utilising the optional built-in charging unit or one of the four simple and rapid battery changing methods. The result: more uptime and increased productivity.

## Features

### Linde compact drive axle

→ Twin drive design with high performance Linde AC technology  
 → Optimum energy efficiency  
 → Maintenance-free oil-bath vane brake  
 → Automatic parking brake  
 → Electronic components housed in sealed unit for complete protection



### Linde hydrostatic power steering

→ Minimal physical demands on the operator  
 → Compact ergonomically designed steering wheel  
 → Linde combi steer axle for outstanding manoeuvrability

### Linde twin accelerator control

→ Seamless, rapid reversing without repositioning the feet  
 → Short pedal travel  
 → Fatigue-free working  
 → Increased throughput and performance

### Linde Load Control

→ Small tactile joystick integrated in an adjustable armrest  
 → Precise and effortless fingertip joystick control of all mast functions  
 → Safe and highly efficient load handling

### Linde Dual Motor Drive

→ Two powerful AC drive motors integrated in the front axle  
 → Seamless acceleration and variable torque characteristics  
 → Extremely quiet in operation



### Linde operator's compartment

→ Ergonomically designed for efficient, fatigue-free working  
 → Spacious operator's compartment with generous floor plate area  
 → Cushioned comfort – mast and drive axle are isolated from the chassis and cab by a unique resilient suspension system that absorbs shock loadings



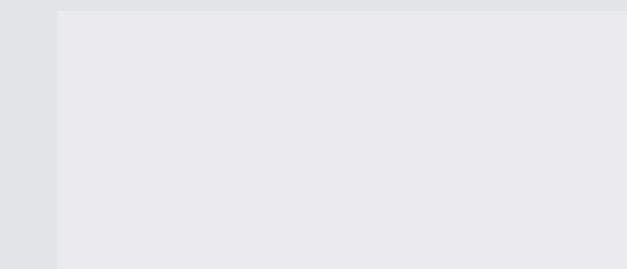
### Linde clearview mast design

→ with top mounted tilt cylinders for seamless load control and stability  
 → Excellent view of load and surroundings through the robust yet slim mast profiles  
 → Nominal capacity retained to maximum lift heights  
 → High residual capacities in all applications



### Linde energy management

→ Optimised energy consumption  
 → Accurate battery condition indicator  
 → Simple horizontal or vertical battery changing options  
 → Optional built-in high frequency charger for convenience and flexibility  
 → Record of battery usage



# Technical Data according to VDI 2198

Characteristics	LINDE											
	1.1	1.2	1.3	1.4	1.5	1.6	1.8	1.9	2.1	2.2	2.3	
Manufacturer	LINDE											
Model designation	E35/600H, E40/600H, E45/600H, E40/600HL, E45/600HL, E50HL, E40/600L, E45/600L, E50L											
Power unit	Battery											
Operation	Seat											
Load capacity	Q (t)	3.5	4.0	4.5	4.0	4.5	5.0	4.0	4.5	5.0		
Load centre	c (mm)	600	600	600	600	600	500	600	600	500		
Axle centre to fork face	x (mm)	538	548	548	548	548	548	548	548	548		
Wheelbase	y (mm)	1905	1905	1905	2050	2050	2050	2050	2050	2050		
Service weight	(kg)	6875 <sup>1)</sup>	7360 <sup>1)</sup>	7870 <sup>1)</sup>	7285 <sup>1)</sup>	7740 <sup>1)</sup>	7895 <sup>1)</sup>	7435 <sup>1)</sup>	7890 <sup>1)</sup>	7770 <sup>1)</sup>		
Axle load with load, front/rear	(kg)	9351 / 1024	10235 / 1125	11057 / 1313	10230 / 1055	11025 / 1215	11566 / 1329	10410 / 1025	11205 / 1185	11471 / 1299		
Axle load without load, front/rear	(kg)	3760 / 3115 <sup>1)</sup>	3825 / 3535 <sup>1)</sup>	3845 / 4025 <sup>1)</sup>	3990 / 3295 <sup>1)</sup>	4005 / 3735 <sup>1)</sup>	4010 / 3885 <sup>1)</sup>	4170 / 3265 <sup>1)</sup>	4185 / 3705 <sup>1)</sup>	3915 / 3855 <sup>1)</sup>		
Tyres rubber, SE, pneumatic, polyurethane		SE										
Tyre size, front		355/45-15 (28x12.5-15)										
Tyre size, rear		225/75-10 (23x9-10)										
Wheels, number front/rear (x = driven)		2x / 2										
Track width, front	b10 (mm)	1149	1149	1149	1149	1149	1149	1149	1149	1149		
Track width, rear	b11 (mm)	932	932	932	932	932	932	932	932	932		
Mast/fork carriage tilt, forward/backward	a/b (°)	5.0 / 8.0										
Height of mast, lowered	h1 (mm)	2433	2433	2433	2433	2433	2160	2433	2160	2160		
Free lift	h2 (mm)	150	150	150	150	150	1260	150	1260	1260		
Lift	h3 (mm)	3100	3100	3100	3100	3100	4075	3100	4075	4075		
Height of mast, extended	h4 (mm)	4000	4000	4000	4000	4000	4975	4000	4975	4975		
Height of overhead guard (cabin)	h6 (mm)	2360	2360	2360	2360	2360	2220	2360	2220	2220		
Height of seat/stand-on platform	h7 (mm)	1230	1230	1230	1230	1230	1155	1230	1155	1155		
Towing coupling height	h10 (mm)	722	722	722	722	722	722	722	722	722		
Overall length	l1 (mm)	3712	3722	3722	3867	3867	3867	3867	3867	3867		
Length to fork face	l2 (mm)	2712	2722	2722	2867	2867	2867	2867	2867	2867		
Overall width	b1/b2 (mm)	1440 / 1278	1440 / 1278	1440 / 1278	1440 / 1278	1440 / 1278	1440 / 1278	1440 / 1278	1440 / 1278	1440 / 1278		
Fork dimensions	s/e/l (mm)	50 x 120 x 1000	60 x 130 x 1000	60 x 130 x 1000	60 x 130 x 1000	60 x 130 x 1000	60 x 130 x 1000	60 x 130 x 1000	60 x 130 x 1000	60 x 130 x 1000		
Fork carriage to ISO 2328, class/type A, B		3A										
Width of fork carriage	b3 (mm)	1350	1350	1350	1350	1350	1350	1350	1350	1350		
Ground clearance, below mast	m1 (mm)	146	145	144	145	144	143	145	144	143		
Ground clearance, centre of wheelbase	m2 (mm)	160	160	160	160	160	160	160	160	160		
Aisle width with pallet 1000 x 1200 across forks	Ast (mm)	3954 <sup>2)</sup>	3964 <sup>2)</sup>	3984 <sup>2)</sup>	4109 <sup>2)</sup>	4109 <sup>2)</sup>	4109 <sup>2)</sup>	4109 <sup>2)</sup>	4109 <sup>2)</sup>	4109 <sup>2)</sup>		
Aisle width with pallet 800 x 1200 along forks	Ast (mm)	4154 <sup>2)</sup>	4164 <sup>2)</sup>	4184 <sup>2)</sup>	4309 <sup>2)</sup>	4309 <sup>2)</sup>	4309 <sup>2)</sup>	4309 <sup>2)</sup>	4309 <sup>2)</sup>	4309 <sup>2)</sup>		
Turning radius	Wa (mm)	2216	2216	2236	2361	2361	2361	2361	2361	2361		
Minimum pivoting point distance	b13 (mm)	580	580	580	580	580	580	580	580	580		
Travel speed, with/without load	(km/h)	20 / 20	20 / 20	20 / 20	20 / 20	20 / 20	20 / 20	20 / 20	20 / 20	20 / 20		
Lifting speed, with/without load	(m/s)	0.45 / 0.56	0.42 / 0.56	0.39 / 0.56	0.42 / 0.56	0.39 / 0.56	0.35 / 0.5	0.42 / 0.56	0.39 / 0.56	0.35 / 0.5		
Lowering speed, with/without load	(m/s)	0.55 / 0.55	0.55 / 0.55	0.55 / 0.55	0.55 / 0.55	0.55 / 0.55	0.55 / 0.55	0.55 / 0.55	0.55 / 0.55	0.55 / 0.55		
Tractive force, with/without load	(N)	4600 / 4600	4600 / 4600	4600 / 4600	4600 / 4600	4600 / 4600	4600 / 4600	4600 / 4600	4600 / 4600	4600 / 4600		
Maximum tractive force, with/without load	(N)	19000 / 19000	19000 / 19000	19000 / 19000	19000 / 19000	19000 / 19000	19000 / 19000	19000 / 19000	19000 / 19000	19000 / 19000		
Climbing ability, with/without load	(%)	6.0 / 9.1	5.5 / 8.5	5.0 / 7.9	5.5 / 8.6	5.1 / 8.1	4.8 / 7.9	5.5 / 8.6	5.1 / 8.1	4.8 / 7.9		
Maximum climbing ability, with/without load	(%)	19.0 / 29.4	17.3 / 27.3	16.0 / 25.4	17.4 / 27.6	15.2 / 25.8	15.2 / 25.3	17.4 / 27.6	16.0 / 25.8	15.2 / 25.3		
Acceleration time, with/without load	(s)	4.5 / 4.2	4.7 / 4.2	4.9 / 4.2	4.7 / 4.2	4.9 / 4.2	5.2 / 4.2	4.7 / 4.2	4.9 / 4.2	5.2 / 4.2		
Service brake		hydr./mech.										
Drive motor, 60 minute rating	(kW)	2x 11.9										
Lift motor rating at S3 15%	(kW)	25										
Battery according to DIN 43531/35/36 A,B,C,no		43 536 / A										
Battery voltage/rated capacity (5h)	(V/Ah)	80 / 700-775										
Battery weight (± 5%)	(kg)	1863										
Power consumption according to VDI cycle	(kWh/h)	10,2										
Type of drive control		Digital/stepless										
Operating pressure for attachments	(bar)	170										
Oil flow for attachments	(l/min)	55										
Noise level at operator's ear	(dB(A))	50.0										

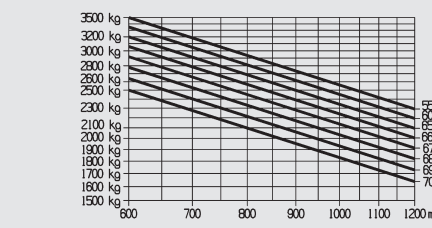
1) Figures with battery, see line 6.4/6.5.

2) Including a 200 mm (min.) operating aisle clearance.

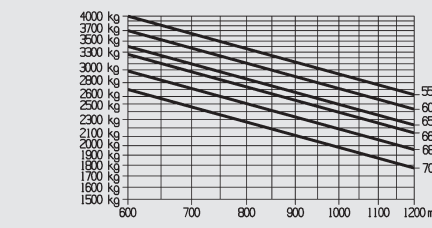
## Load Capacity Diagrams

valid for standard mast with SE tyres 28x12.5-15 and fork carriage

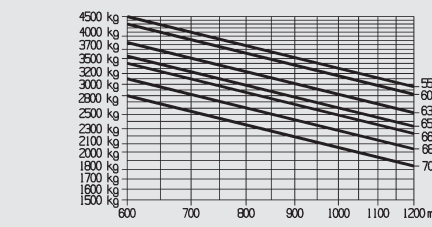
### E 35/600 H



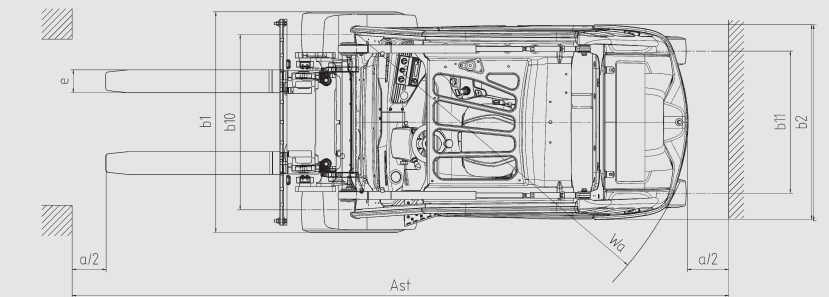
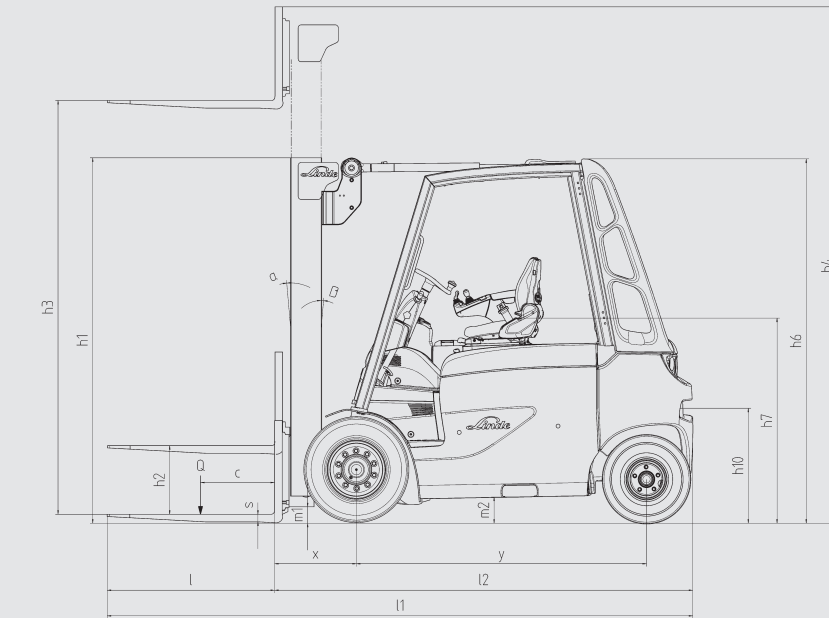
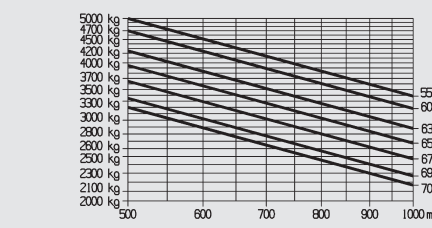
### E 40/600 H, E 40/600 HL



### E 45/600 H, E 45/600 HL



### E 50 HL



Standard mast	E35/600H E40/600H					E40/600HL E45/600HL E50HL					
	Lift	h3	3100	3700	4100	4400	5000	3100	3700	4400	5000
Mast retracted *	h1	2433	2733	2933	3083	3383	2433	2733	2933	3083	3383
Mast extended	h4	3800	4400	4800	5100	5700	4000	4600	5000	5300	5900
Free lift	h2	150	150	150	150	150	150	150	150	150	150

Triplex mast	E35/600H E40/600H			E40/600HL E45/600HL E50HL				
	Lift	h3	4675	5515	6015	4675	5515	6015
Mast retracted	h1	2360	2660	3060	2360	2660	3060	
Mast extended	h4	5375	6215	7315	5575	6415	7515	
Free lift	h2	1660	1960	2360	1460	1760	2160	

Figures in mm  
Figures for other equipments and triplex masts on request