

Standard and optional equipment

Standard equipment

Truck	Plenty of storage space for writing utensils, beverage cans, etc.
Linde twin drive pedals to control forward/reverse travel and braking	Superelastic tyres
Linde Load Control integrated in armrest	LPG truck fitted with two-way catalytic converter and the gas cylinder mount is ergonomically designed for easy changing
Container entry height (overhead guard 2,123 mm)	LPG volumetric fuel tank version has a fuel level indicator in the display consul
Hydraulic-suspension comfort-class seat with extensive range of adjustment	
Hydrostatic steering with on-demand power assist	
High safety and stability ensured by Linde ProtectorFrame	
Air intake filter with integral cyclone separator	
High-performance hydraulic filter concept, preserves maximum oil purity and extends life of all hydraulic components	
Anti-glare display with fuel gauge, clock, hour meter and servicing information	
Control lights on display for engine oil pressure, engine overheating, parking brake, audible warning signal for engine and hydraulic oil temperature, blocked intake filter and low fuel level	

Options

Single drive pedal with direction selector positioned on armrest	Roof shade, clipboard, interior lighting, height-adjusting steering column
Standard masts up to 5,610 mm lift	Truck lighting, work lamps
Duplex masts (full free lift) up to 4,125 mm lift	Mirrors
Triplex masts (full free lift) up to 6,075 mm lift	Highway specifications
Integral sideshift	Integral diesel particulate filter with charge status indicator on the display consul
Load backrest	Air precleaner
One or two auxiliary hydraulic circuits for all mast types	Audible reversing alarm, flasher and strobe beacons
Alternative fork lengths	Biodiesel (RME) fuel version
Overhead guard can be upgraded to full cabine with roof, front and rear screens and doors (also available with tinted glass)	LPG truck is fitted with accurate ultrasonic fuel level indicator for exchange cylinders
Wiper-washers for front, rear and roof screens	Custom paintwork
Seats providing additional comfort and adjustments	
Cab heater with integral pollen filter	
Air condition with integral pollen filter	
Radio with cassette player and speakers	Other options available on request



Diesel and LPG Forklift Trucks Capacity 1400 – 2000 kg H 14 – H 20

SERIES 391

Features

Original Linde hydrostatic drive

- Responsive, smooth and precise driving
- No clutch, differential or drum brakes; hydrostatic drive assumes function of service brake
- Robust drive system, well proven in severest duty
- Low maintenance costs and long life

Linde twin drive pedals

- Quick change of forward/reverse direction without changing feet on pedals
- Short pedal stroke
- No leg fatigue
- Increased productivity

Linde Load Control

- Accurate, safe load handling
- Effortless fingertip control of all mast functions
- Traction and lift functions completely separate

Linde ProtectorFrame

- Safe and robust chassis, enclosed on all sides
- Engine hood and servicing doors open wide for convenient access to all components



Linde operator compartment

- Designed to advanced ergonomic standards
- Spacious cab with automobile-equivalent legroom
- Excellent visibility of load and surroundings due to slim-line mast sections
- Cushioned drive axle reduces road shock
- Minimum driving noise



Linde Truck Control

- Reliable electronic controller
- Easily matched to individual requirements
- High dependability resulting from redundant monitoring systems
- Automatic control of engine speed as function of load
- Casing totally enclosed for protection from dust and dirt



Linde clear-view mast

- Superb visibility through slim-profile sections of mast
- Full load capacity up to maximum lift height
- Exceptional residual capacity
- Zero-maintenance rubber mounting of mast and tilt jacks
- Electronic limiting of tilt angle

Safety

Linde ProtectorFrame: The protective overhead guard and its supporting frame together form a strong and completely enclosed protective zone providing optimum structural integrity, safety and protection for the operator. The top mounted tilt cylinders provide seamless, smooth control of the tilt movements for excellent load stability in all operating conditions. This unique design also enables slimmer mast profiles to be fitted for outstanding visibility.

Performance

Low consumption levels and low exhaust emission and yet this truck still continues to impress with its excellent performance. Advanced engine and drive technology combined with the original Linde Load Control system enables the operator to use the truck's vast potential to maximise productivity. Comfortable and precise fingertip control of all mast functions.

Comfort

Climb on board relaxed, leave again relaxed. Linde brings to this forklift a generously sized automobile-class workspace. Designed to the most advanced ergonomic standards. Spacious cab interior, adjustable armrest, suspension seat and functional positioning of easy-actuation controls allows fast, stress-free working.



Linde operator compartment

- Designed to advanced ergonomic standards
- Spacious cab with automobile-equivalent legroom
- Excellent visibility of load and surroundings due to slim-line mast sections
- Cushioned drive axle reduces road shock
- Minimum driving noise



Linde Truck Control

- Reliable electronic controller
- Easily matched to individual requirements
- High dependability resulting from redundant monitoring systems
- Automatic control of engine speed as function of load
- Casing totally enclosed for protection from dust and dirt



Linde clear-view mast

- Superb visibility through slim-profile sections of mast
- Full load capacity up to maximum lift height
- Exceptional residual capacity
- Zero-maintenance rubber mounting of mast and tilt jacks
- Electronic limiting of tilt angle



Technical data

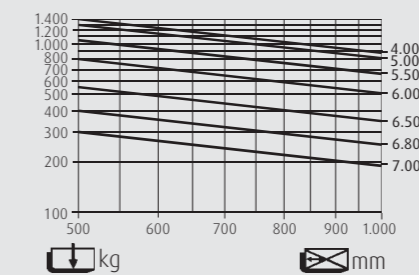
	Characteristics		LINDE	LINDE	LINDE	LINDE	LINDE	LINDE	LINDE	LINDE
	1.1	Manufacturer	LINDE	LINDE	LINDE	LINDE	LINDE	LINDE	LINDE	LINDE
	1.2	Model designation	H14D	H14T	H16D	H16T	H18D	H18T	H20D	H20T
	1.3	Power unit: Battery, diesel, gasoline, LP gas, AC	Diesel	LPG	Diesel	LPG	Diesel	LPG	Diesel	LPG
	1.4	Operation: Manual, pedestrian, rider stand, rider seat, order picker	Seated	Seated	Seated	Seated	Seated	Seated	Seated	Seated
	1.5	Load capacity	Q (t)	1.4	1.4	1.6	1.6	1.8	1.8	2.0
	1.6	Load center	c (mm)	500	500	500	500	500	500	500
	1.8	Load distance	x (mm)	365	365	365	365	370	374	374
	1.9	Wheelbase	y (mm)	1500	1500	1500 (1600) ⁴⁾	1500 (1600) ⁴⁾	1540 (1600) ⁴⁾	1540 (1600) ⁴⁾	1600
Weight	2.1	Service weight	kg	2590	2570	2745 (2795) ⁴⁾	2725 (2775) ⁴⁾	2910	2890	3060
	2.2	Axle load with load, front / rear	kg	3490/500	3450/520	3820/525 (3760/635) ⁴⁾	3780/545 (3720/655) ⁴⁾	4160/550 (4120/590) ⁴⁾	4120/570 (4080/610) ⁴⁾	4480/580
	2.3	Axle load without load, front / rear	kg	1280/1310	1240/1330	1295/1450 (1295/1500) ⁴⁾	1255/1470 (1255/1520) ⁴⁾	1340/1570 (1340/1570) ⁴⁾	1300/1590 (1300/1590) ⁴⁾	1390/1670
Wheels and tyres	3.1	Tyres: Solid rubber (R), Superelastic (SE), Pneumatic (P), Polyurethane (PU)	SE	SE	SE	SE	SE	SE	SE	SE
	3.2	Tyre size, front	18x7-8 ³⁾	18x7-8 ³⁾	18x7-8 ³⁾	18x7-8 ³⁾	18x7-8 ³⁾	18x7-8 ³⁾	200/50-10	200/50-10
	3.3	Tyre size, rear	18x7-8	18x7-8	18x7-8	18x7-8	18x7-8	18x7-8	18x7-8	18x7-8
	3.5	Wheels, number front / rear (x = driven)	2x/2	2x/2	2x/2	2x/2	2x/2	2x/2	2x/2	2x/2
	3.6	Track width, front	b10 (mm)	930	930	930	930	930	945	945
	3.7	Track width, rear	b11 (mm)	873	873	873	873	873	873	873
	Dimensions	4.1	Mast / fork carriage tilt, forward / back	α/β (°)	6.0/9.0 ²⁾	6.0/9.0 ²⁾	6.0/9.0 ²⁾	6.0/9.0 ²⁾	6.0/9.0 ²⁾	6.0/9.0 ²⁾
4.2		Height of mast, lowered	h1 (mm)	2197 ³⁾	2197 ³⁾	2197 ³⁾	2197 ³⁾	2197 ³⁾	2197 ³⁾	2198 ³⁾
4.3		Free lift	h2 (mm)	150	150	150	150	150	150	150
4.4		Lift	h3 (mm)	3110	3110	3110	3110	3110	3110	3110
4.5		Height of mast, extended	h4 (mm)	3754	3754	3754	3754	3754	3755	3755
4.7		Height of overhead guard/cab	h6 (mm)	2123	2123	2123	2123	2123	2123	2123
4.8		Height of seat	h7 (mm)	1067	1067	1067	1067	1067	1067	1067
4.12		Height of tow coupling	h10 (mm)	557	557	557	557	549	549	530
4.19		Overall length	l1 (mm)	3112	3112	3112 (3222) ⁴⁾	3112 (3222) ⁴⁾	3152 (3227) ⁴⁾	3152 (3227) ⁴⁾	3231
4.20		Length to fork face	l2 (mm)	2212	2212	2212 (2322) ⁴⁾	2212 (2322) ⁴⁾	2252 (2327) ⁴⁾	2252 (2327) ⁴⁾	2331
4.21		Overall width	b1/b2 (mm)	1086	1086	1086	1086	1086	1152	1152
4.22		Fork dimensions	s/e/l (mm)	40x80x900	40x80x900	40x80x900	40x80x900	45x100x900	45x100x900	45x100x900
4.23		Fork carriage to DIN 15173, Class/Form A, B		2A	2A	2A	2A	2A	2A	2A
4.24		Width of fork carriage	b3 (mm)	1040	1040	1040	1040	1040	1040	1040
4.31		Ground clearance under mast, with load	m1 (mm)	94	94	93	93	92	92	95
4.32		Ground clearance, center of wheelbase	m2 (mm)	120	120	119	119	118	118	121
4.33	Aisle width, 1000 x 1200 mm pallet crosswise	Ast (mm)	3570	3570	3570 (3686) ⁴⁾	3570 (3686) ⁴⁾	3611 (3691) ⁴⁾	3611 (3691) ⁴⁾	3695	
4.34	Aisle width, 800 x 1200 mm pallet lengthwise	Ast (mm)	3770	3770	3770 (3886) ⁴⁾	3770 (3886) ⁴⁾	3811 (3891) ⁴⁾	3811 (3891) ⁴⁾	3895	
4.35	Turning radius	Wa (mm)	2005	2005	2005 (2121) ⁴⁾	2005 (2121) ⁴⁾	2041 (2121) ⁴⁾	2041 (2121) ⁴⁾	2121	
4.36	Minimum pivot point distance	b13 (mm)	600	600	600 (638) ⁴⁾	600 (638) ⁴⁾	615 (638) ⁴⁾	615 (638) ⁴⁾	638	
Performance	5.1	Travel speed, with / without load	km/h	20/20	20/20	20/20	20/20	20/20	20/20	20/20
	5.2	Lift speed, with / without load	m/s	0.6/0.63	0.6/0.63	0.6/0.63	0.6/0.63	0.6/0.63	0.54/0.57	0.54/0.57
	5.3	Lower speed, with / without load	m/s	0.57/0.57	0.57/0.57	0.57/0.57	0.57/0.57	0.57/0.57	0.57/0.57	0.57/0.57
	5.5	Tractive force, with / without load	N	12900/10050	12900/9700	12900/10150	12900/9850	12900/10500	12900/10200	12900/10900
	5.7	Climbing ability, with / without load	%	35/40	35/39	32/38	32/37	29/37	29/36	27/36
	5.9	Acceleration, with / without load	s	4.7/4.2	4.7/4.2	4.9/4.3	4.9/4.3	5.0/4.5	5.0/4.5	5.1/4.6
5.10	Service brake		hydrostatic	hydrostatic	hydrostatic	hydrostatic	hydrostatic	hydrostatic	hydrostatic	
IC-engine	7.1	Engine manufacturer/type	VW/BXT	VW/BEF	VW/BXT	VW/BEF	VW/BXT	VW/BEF	VW/BXT	VW/BEF
	7.2	Engine output to ISO 1585	kW	26	28	26	28	26	26	28
	7.3	Rated speed	min ⁻¹	2100	2100	2100	2100	2100	2100	2100
	7.4	Number of cylinders/cubic capacity	cm ³	4/1896	4/1984	4/1896	4/1984	4/1896	4/1984	4/1984
	7.5	Fuel consumption to VDI cycle	l/h; kg/h	2.2 ⁵⁾	2.0 ⁵⁾	2.3 ⁵⁾	2.1 ⁵⁾	2.4 ⁵⁾	2.2 ⁵⁾	2.3 ⁵⁾
Others	8.1	Traction control		hydr./infinitely variable	hydr./infinitely variable	hydr./infinitely variable	hydr./infinitely variable	hydr./infinitely variable	hydr./infinitely variable	hydr./infinitely variable
	8.2	Working pressure for attachments	bar	180	180	170	170	170	170	170
	8.3	Oil flow for attachments	l/min	38	38	38	38	38	38	38
	8.4	Noise level at driver's ear to EN 12053	dB(A)	75	73	75	73	75	73	73
	8.5	Tow coupling, design/type		-	-	-	-	-	-	-

All data based on standard equipment with Standardmast 3110 mm
¹⁾ Alternatively SE 18x7-8 or 200/50-10 (SE)
²⁾ Lift height and equipment can alter rear mast tilt angle

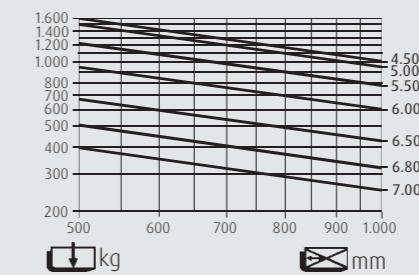
³⁾ With 150 mm free lift on standard mast
⁴⁾ When ordering ETB Diesel particulate filter (Filter changing) and LPG bottles (big) for GB, AUS, J
⁵⁾ Figure higher than previous due to amended measuring method in VDI Code 2198

Lifting capacity diagrams

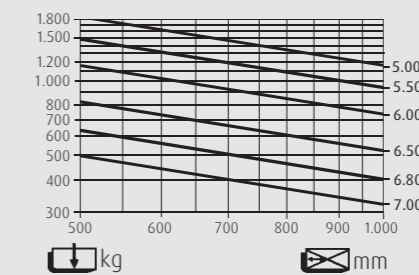
H14



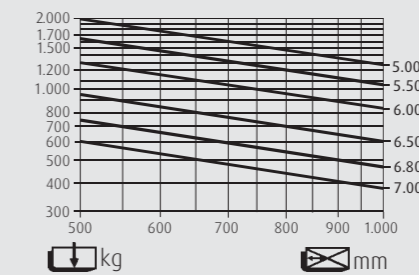
H16



H18



H20



Lifting capacity diagrams are valid for Standard- and Duplexmasts without integrated sidishift with SE-tyres.

Overall height and lift heights, Standard (in mm)		H14/H16/H18/H20		
Lift	h3	3110	3810	4210
Mast retracted (with 150 mm free lift – standard)	h1#	2196	2546	2746
Mast extended	h4	3713	4413	4813
Special free lift	h2	150	150	150

Overall height and lift heights, Duplex (in mm)		H14/H16/H18/H20		
Lift	h3	3125	3825	-
Mast retracted	h1	2121	2471	-
Mast extended	h4	3727	4427	-
Special free lift	h2	1518	1868	-

Overall height and lift heights, Triplex (in mm)		H14/H16/H18/H20		
Lift	h3	4625	5475	-
Mast retracted	h1	2121	2471	-
Mast extended	h4	5227	6077	-
Special free lift	h2	1518	1781	-

Figures for other equipments and triplex masts on request.

